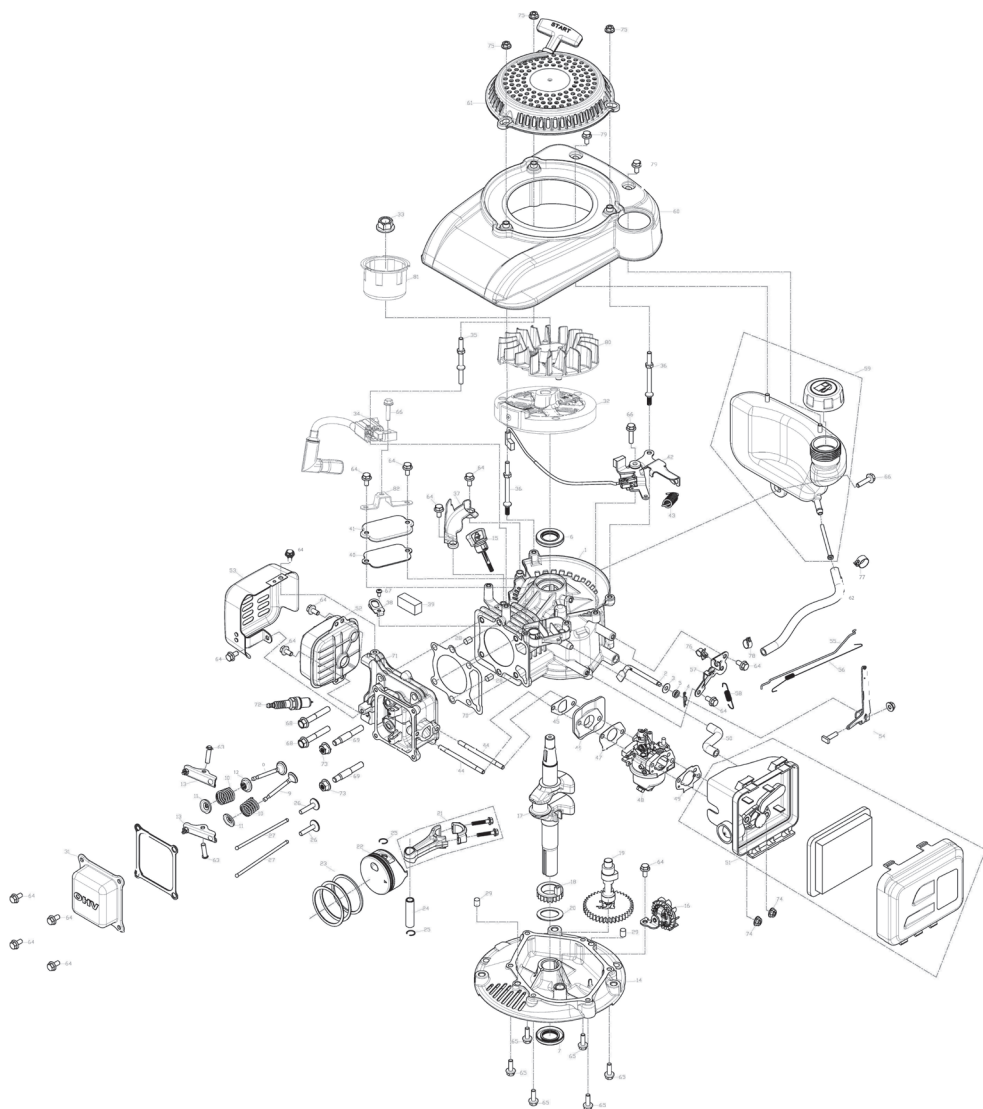


## EXPLODED VIEW AND SPARE PARTS LIST



RD-GLM07 075002 SPARE PARTS		
№	NAME	QTY
1	Driving rod	1
2	Top armrest rod	1
3	Driving choke off rod assy	1
4	choke off rod	1
5	engine	1
6	bol M6x35	1
7	nut M6	8
8	knob	2
9	nut M8	2
10	bol M6x50	2
11	Lower armrest rod	1
12	wire clip	2
13	driving tension spring	1
14	back cover	1
15	E retainer ring Φ5	4
16	back cover axle	1
17	back cover torsional spring	1
18	bol M8x16	4
19	nut M8	12
20	left armrest support	1
21	bol M8x16	4
22	height adjusting rod	1
23	height adjusting tension spring	1
24	screw M6x12	4
25	rear axle pressing plate	2
26	nut M5	2
27	16" steel deck	1
28	6" wheel cover	2
29	washer 8.5"16"1	4
30	front wheel assy	2
31	front wheel axle assy	1
32	front wheel axle clip	2
33	W circlip	2
34	bol M6x25	3
35	screw M6x6	2
36	belt cover	1
37	blade 16"	1
38	blade seat assy	1
39	washer < 10.5x< 45X2.5	1
40	blade bol	1
41	bol M6x12	1
42	driving wheel	1
43	key 4x5.5x25	1
44	retainer ring Φ12	2
45	left output gear	1
46	pin	2
47	dust proof cover	2
48	wheel cover	2
49	bearing	6
50	rear wheel assy	2
51	tring Φ13xΦ18x16.6	2
52	right output gear	1
53	tring Φ12.8xΦ16x16	2
54	rear wheel axle assy	1
55	handle assy	1
56	bol M5x10	4
57	height plate	1
58	right armrest support	1
59	height adjusting knob	1
60	return tension spring	1
61	self moving stop plate	1
62	speed charging box	1
63	V belt	1
64	grass bag support assy	1
65	grass bag assy	1
66	washer Φ6xΦ12x1.5	3
67	hanger	1
68	nut M6	1

RD-GLM07 075002 engine spare parts list		
1	crankcase	1
2	speed governing oscillating bar	1
3	speed governing oscillating bar washer	1
4	speed governing oscillating bar locking clip	1
5	oscillating bar oil seal	1
6	oil seal	1
7	oil seal	1
8	intake valve	1
9	valve exhaust	1
10	valve spring	2
11	intake valve spring seat	2
12	oil baffle cover	1
13	Rocker arm assy	2
14	crankcase cover	1
15	Oil level gauge	1
16	speed governing gear assy	1
17	crankshaft	1
18	timing gear	1
19	camshaft	1
20	crankshaft gasket	1
21	connecting rod assy	1
22	piston	1
23	piston ring	1
24	piston pin	1
25	piston circlip	2
26	tappet	2
27	pushing rod	2
28	location pin	2
29	location pin	2
30	cylinder head gasket	1
31	cylinder head	1
32	flywheel	1
33	flywheel nut	1
34	ignition coil	1
35	ignition bolt	1
36	starter bolt	2
37	fan cover	1
38	breather valve	1
39	oil filter	1
40	return chamber gasket	1
41	return chamber cover	1
42	brake assy	1
43	brake spring	1
44	bol M6x29	2
45	intake gasket	1
46	carburetor connecting block	1
47	carburetor gasket	1
48	carburetor	1
49	air filter gasket	1
50	exhaust pipe	1
51	air filter assy	1
52	muffler	1
53	muffler cover	1
54	speed governing arm	1
55	throttle rod	1
56	micro speed governing spring	1
57	speed governing controller	1
58	return spring	1
59	fuel tank	1
60	starter cover	1
61	starter assy	1
62	oil pipe	1
63	Rocker arm pin	2
64	bol	15
65	bol	7
66	bol	3
67	screw	1
68	cylinder bolt	2

69	cylinder bolt	2
70	cylinder gasket	1
71	cylinder	1
72	spark plug	1
73	nut	2
74	nut	2
75	nut	3
76	hanger	1
77	circlip 11	1
78	circlip 10	1
79	bol	1
80	fan	1
81	starter	1
82	ignition support	1